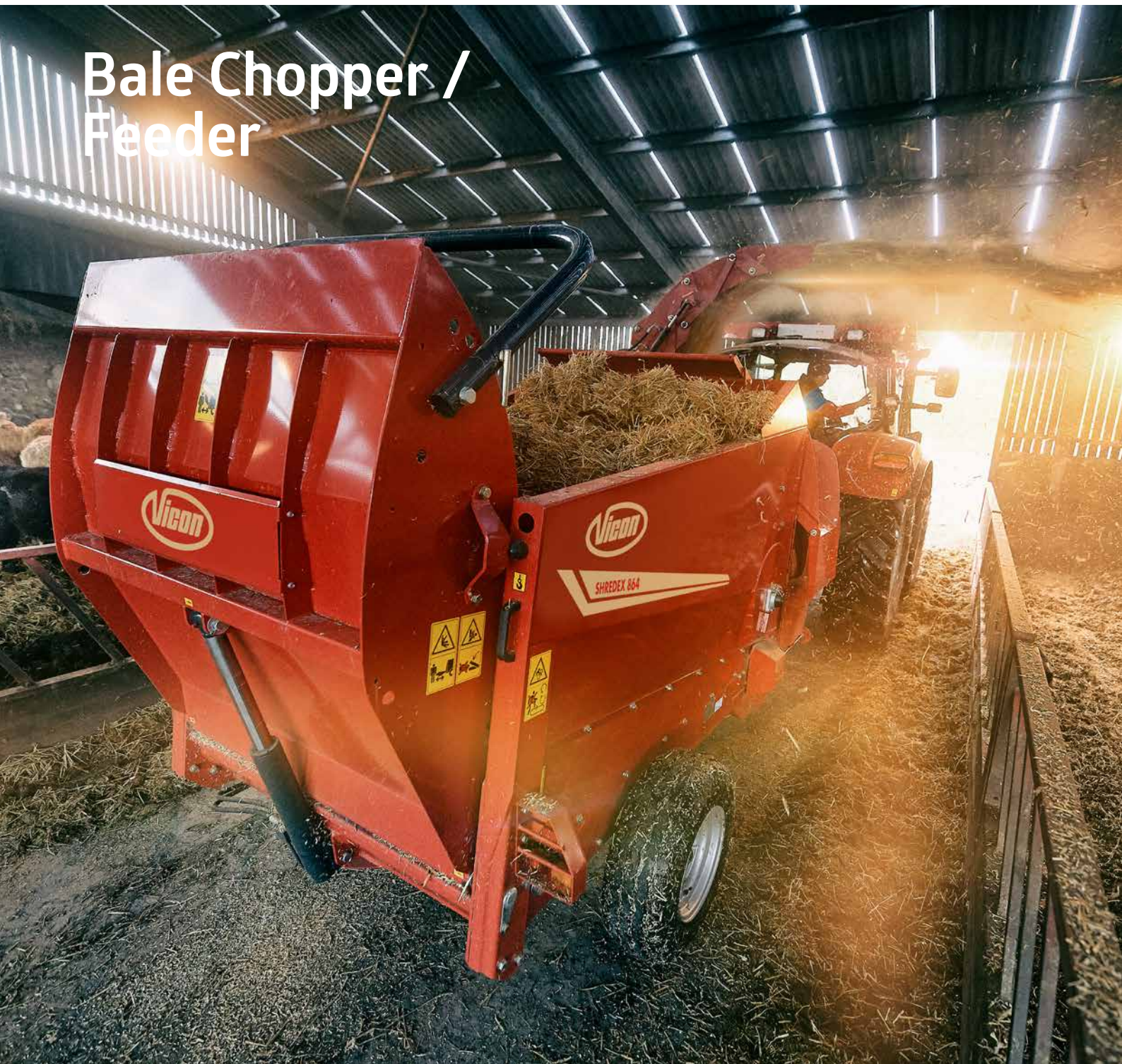


SHREDEX
850-860



Bale Chopper / Feeder



My way of Farming!

MAKE THE MOST OF YOUR MATERIAL



My way of Farming!



Working the land, running my farm and connecting with nature. Farming is my way of living, and despite being rough at times, I never grow weary of everyday tasks of attending to my land and livestock. I keep up with developments by staying loyal to personal philosophies and applying the appropriate strategy.

I shape and influence my own future by combining craftsmanship with modern technology, employing the very best machinery. I actively seek new opportunities, by being innovative in my way of working. I work hard to grow a good crop. I am passionate about my livestock, providing my animals with only the best. My farm and its returns, reflects who I am, because my heart and soul is put into the work I do.

Farming is about passion, about growing and developing, my crop, my farm, myself, my way.

SHREDEX 850-860 – THE PROFESSIONAL CHOPPERS/ FEEDERS

My way of Farming!



Shredex 852

2.0 m³ bale chamber
Single drum
feed system



Shredex 853 Pro-856 Pro

3.0 and 6.0 m³ bale chamber
Drum Feed Control System
(DFCS)/Two drum feed system



Shredex 863

3.0m³ bale chamber
Single drum
feed system



Shredex 863 Pro

3.0m³ bale chamber
Single drum
feed system



Shredex 864

4.2 m³ bale chamber
Drum Feed
Control System (DFCS)



Funnel Design Bale Chamber

Efficient Material Flow



Smooth Bale Chamber Design

A Vicon hallmark is the funnel design bale chamber. Special attention has been directed towards the chamber design, to ensure an efficient flow of material from chamber to drum. The inside of the chamber is smooth and clean for an unrestricted material flow. Material is guided towards the beater drum more evenly and it is easier to empty the chamber when finishing the bales.

Bale chamber funnel design ensures smooth flow of material towards the shredding drum.

The conveyor slats are designed for quick and easy individual replacement.



V-belt drive - low maintenance and quiet drive of the drum.



UltraGlide strips reduce wear to a minimum. (Optional for 852)



Floor Conveyor

The floor conveyor consists of a hydraulically driven chain and slat floor conveyor with variable speed and reversing facility.

The ratio between floor conveyor and shredding drums is carefully designed to ensure smooth material flow. The floor conveyor runs on two wear strips made of special 'UltraGlide' plastic material to reduce friction and increase chain life.

Slat spacing has been specially determined to ensure consistent and even feed to the shredding drums. The strong conveyor slats are designed for quick and easy individual replacement. A rotating marker allows the operator to see the speed and direction of the floor conveyor from the tractor seat. The conveyor has an enclosed lower tray to ensure no spillage or crop loss.

“**Lift capacity**
1200kg”



Easy shifting from bedding to feeding on the 2-speed gearbox.



Wide tailgate design offers easier loading of bales.



Operating both tailgate and floor chain in safe distance from the moving parts, by using the remote control placed on the side of chamber.

Remote Control of Tailgate and floor chain

On top of the control terminal located inside the tractor cab, the trailed bale choppers are equipped with an additional remote controlled switch for the floor chain and tailgate (option 852 & 856 Pro). The ability to operate these functions directly from the side of the machine saves valuable time during loading.

2-Speed Gearbox for Bedding or Feeding Configurations

To provide the correct flywheel speed for bedding and feeding the bale choppers are fitted with 2-speed gearbox. The gearbox speed is adjusted by the handle on the side of the machine.

- At lower speed the flywheel ensures a metered flow of silage or hay for feeding.
- At high speed a powerful blow for the most efficient distribution during bedding is ensured.

Tailgate Design for Easier Loading of Bales

The hydraulically controlled tailgate offers a self-loading capability for easy loading of round or square bales without the need of a second tractor. The wide design of the tailgate makes it easier to load bales. A deep, curved design of the tailgate ensures that the bale is kept firmly inside the tailgate, while the net or twine is removed.

The tailgate offers the ability to carry a second round bale for increased capacity. Total lift capacity of the rear door is 1200kg. A foldable bale retaining kit can be fitted to the end of the tailgate to ensure that the bales stay in position during operation.



Foldable bale retaining kit.



Easy self-loading of baled material.

The Versatile Chute

Optimised Feeding and Bedding



The swivel chute.

The 4-Stage Swivel Chute

The Shredex 4-stage swivel chute offers maximised comfort and is a cost saving solution with less waste and more efficient bedding and feeding process.

The swivel chute operates in 4 stages which optimises the blowing distance when bedding. Depending on the material and conditions of the barn it can blow up to 18/20m, which allows bedding of the most distant corners of the barn.

Designed with a turning radius of 260°, the system enables easy access to even difficult reachable spaces for complete bedding. The 4-stage movement also optimises feeding performance in flat or high troughs, without blockage, even with long fibrous material from round bale silage or hay.





In-Cab Control

Shredex bale choppers offers a greater range of adjustments from the cab with an intuitive and user friendly controlbox. A joystick easily controls the 4-stage swivel chute.

On top of the control terminal located inside the tractor cab, the Vicon bale choppers are equipped with an additional remote controlled switch for the floor chain and tailgate (optional for 852 and 856 Pro).



The 4-stage swivel chute is operated by the intuitive controlbox joystick.

Finish the job ***Faster***

A key aim of the next generation Shredex 860 series is to provide more capacity by shredding the material faster. Flywheel housing and blowing paddles have increased in dimensions to increase performance. This means more material is fed faster into the flywheel, finishing the bale at an impressive pace.



New wider flywheel housing with capacity for more material to flow through, faster.

1. Wider Flywheel Housing for More Capacity

The extended dimensions of the flywheel housing and blowing paddles increase performance of the bale chopper. This enables the new Shredex 860 series to handle more material at higher speed and efficiently transport the material into the chute.

2. Beater Drum Design for More Productivity

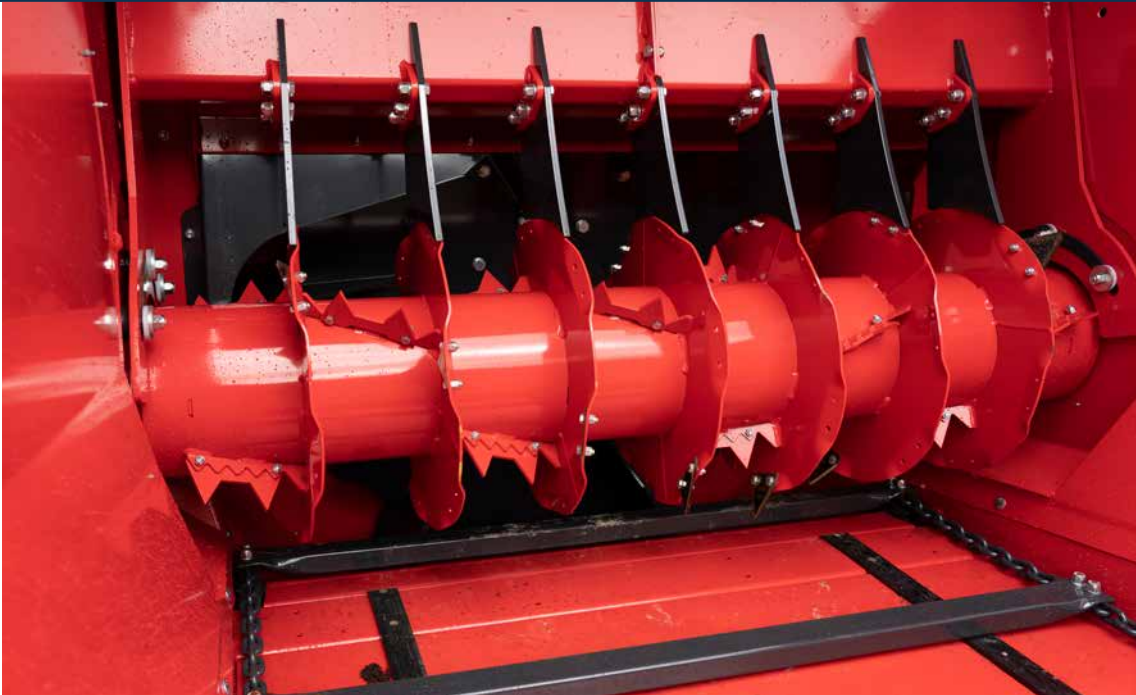
Shredex 860 series use a smaller diameter beater, creating a more open design to handle larger volumes of material. Redesigned grippers provide more aggressive guidance of material into the flywheel.

3. Improved Flywheel Design

1.55m diameter flywheel with 6 specially angled blowing paddles, designed for transporting large amount of material. Bolt-on paddles ensure easy replacement in case of damage.

4. Wider Swivel Chute Design

Size and area of exit from flywheel housing to swivel chute has increased to match the extended dimensions of the flywheel housing. This support higher capacity and reduces risk of blockage.



Small diameter shredder rotor capable of handling large volumes of straw.

More Productivity

Shredex 860 series is our next generation bale choppers that offer a completely redesigned flywheel solution with focus on increased material flow.

The extended dimensions of the flywheel housing and blowing paddles increase performance of the bale chopper. This enables the Shredex 860 series to handle more material at higher speed and efficiently transport the material into the chute.



Bolt on paddles for easy and time efficient repair in case of damage.



Maximum Performance ***Smooth Operation***

The Shredex 863 has the power to perform with its new high capacity flywheel housing. It features better crop flow and more shredding capacity for improved capacity.

- Wider flywheel housing with capacity for more material to flow through, faster.
- Slim design of shredder rotor allows more material to flow through.
- 4 stage swivel chute for more accurate bedding and feeding applications.
- Extended drawbar design and wide angle PTO for better manoeuvrability.



“**New high capacity flywheel housing**”



The extended drawbar ensures easier operation, especially when turning with larger tyred tractors.



Adjustable slide for guiding material away from the wheel of the bale chopper.



4-stage swivel chute for more accurate guidance of material. Especially when using the feeding application.



Operating both tailgate as well as floor chain in a safe distance from the moving parts by using the remote control placed on the side of the 860 series.



An ultimate all-round ***Bale chopper***

Performance to Do More

The Shredex 863 Pro is designed to distribute straw, hay and silage and is a flexible and efficient solution for bedding and feeding applications. It come with a new designed belt clutch solution for disengagement of the shredder rotor and a new designed hydraulic comb.

- Wider flywheel housing with capacity for more material to flow through, faster.
- Hydraulic activation of shredder rotor to allow flywheel to get at full speed before material is being shred.
- Hydraulic comb to control material flow into the flywheel.
- Top guard reduces spillage and guides material towards the shredder drum.

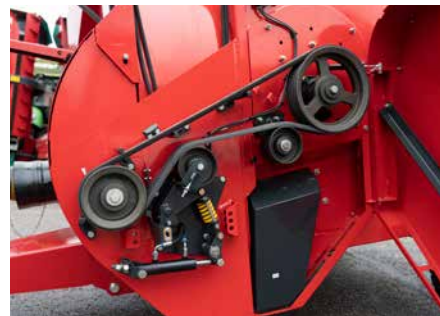


Flywheel can be activated and run at full speed before the shredder drum is activated and material is being fed into the flywheel housing.

Hydraulic Activation of Shredder Rotor

With minimum downtime in mind, the Shredex 863 Pro has a new anti-blockage solution. Valuable time is lost, if you block chute and flywheel and manually needs to unblock it.

With the Vicon belt clutch solution, the shredder rotor can be run independently from the flywheel and disengaged when starting up the flywheel. This allows the flywheel to go to full speed before the shredder rotor is activated and starts feeding material into the flywheel housing. This all done hydraulically from the tractor cab.



“**New anti-blockage solution**
– minimum downtime in mind”

Hydraulic Comb

The Shredex 863 Pro is developed to work efficiently with straw, hay and silage material. The operator will enjoy the hydraulic comb that is controlled from the tractor cab. It is an efficient tool to control the flow of material into the flywheel to prevent blocking flywheel and chute. Especially when feeding loosing material like clam silage it proves to be a values feature.

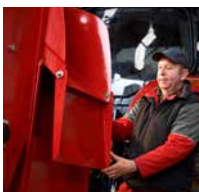
Top Guard

The new top guard reduces spillage and ensures material stay inside the bale chamber. It efficiently guides material towards the shredders. When loading new material into the bale chamber, the top guard can be opened to allow unrestricted access and easy loading.





Pro Efficiency *Anto Blockage*



Adjustable slide.



The hydraulically driven swivel chute operates in 4 stages which optimises the blowing distance when bedding.

Packed with Features

Shredex 864 is loaded with features that lets you do more, with less effort and in less time. It has grown its dimensions in all aspects with a massive 4.2m³ chamber size and is a full feature bale chopper.

Shredex 864 handles 2.1m diameter round bales and is the ideal bale chopper for bedding and feeding applications. Its' longer body design provides even better support and stability for large square bales.



A blowing distance up to 20m, depending on conditions, ensures excellent reach and operability.

Blockage Free Operation

Shredex 864 is fitted with Drum Feed Control System (DFCS), an efficient solution for blockage free operation when feeding loose material. It is a simple and reliable system, which includes a powerful electric cylinder and comb positioned above the drum. During loading the DFCS is engaged, which means that the comb is in a lowered position. This ensures that blockages of the flywheel are minimized during the start up process in loose materials.



An extended drawbar provides best possible maneuverability during operation. The extended drawbar ensures easier operation, especially when turning with larger tyred tractors.



Shredex 864 features an integrated stone trap positioned at the bottom of the floor conveyor. Foreign objects are separated from the material and easily removed afterwards.

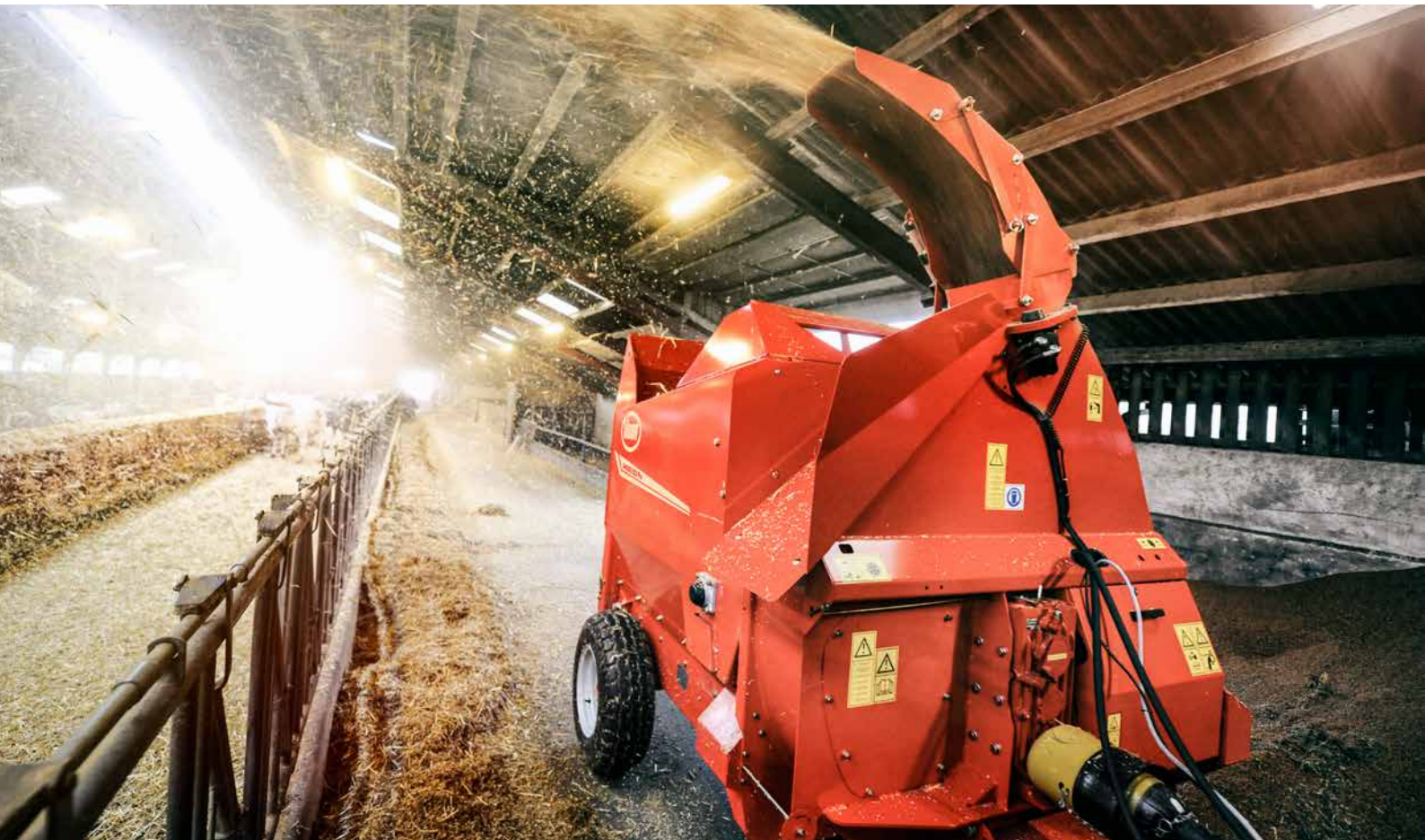
“Minimising Risk of Blockages”



DFCS engaged to reduce the risk of blockages during loading and flywheel start up.



DFCS disengaged for maximum flow through the flywheel.



Capacity for Three ***Round Bales***



Two drum solution designed to handle large volumes of material.

Two Drum Solution for Added Chopping Capacity

The two drums of the Shredex 856 Pro feature the unique design of angled knives passing the 'comb' on alternate sides - even feed to the flywheel, reduced blockage and clean at the end.

“**The flywheel** is fitted with 6 large front blower paddles”



Extended paddles on the flywheel increase blowing distance and performance significantly. Bolt-on paddles ensure easy replacement in case of damage.

Specialised Flywheel Configuration

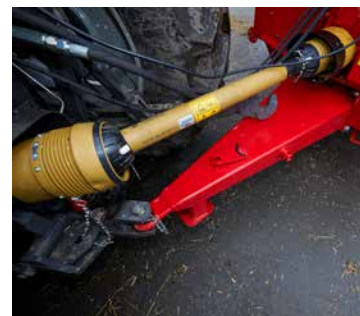
A dedicated flywheel configuration has been developed for the Shredex 856 Pro. To maximise airflow the 1.55m diameter flywheel is fitted with 6 large front blower paddles. These paddles ensure optimum flow towards the chute for an extended blowing distance, as well as an excellent cleaning of the flywheel housing. Additionally the flywheel features 3 main paddles for an increased intake of material from chamber to flywheel. The flywheel does not chop the straw, thus ensures virtual full length material suitable for bedding of covered yard areas.



Shredex 856 Pro will take 3 round bales for maximum capacity.



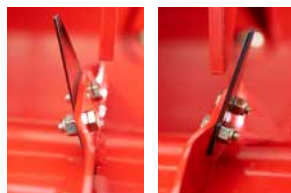
Easy access when loading from the top.



Standard fitted with wide angle PTO and remote control.



The Multipurpose *Machine*



A patented system - the knives pass the fixed comb on alternative sides for a more even cut.

Unique Drum Design to Handle a Wide Variety of Materials

The Shredex range includes a unique drum – knife configuration. The knives are mounted on angled rings so they pass a fixed 'comb' on alternative sides.

This ensures that the materials are cut and fed into the flywheel chamber evenly, reducing the risk of blockage, offering even discharge and leaving the drum and comb clean. The drum is fitted with 14 knives as standard, but will accept a further 28 knives according to material type – simply bolt them on in a matter of minutes.



Long drawbar and wide angle PTO for improved turning with larger tyred tractors is standard.



Shredex 853 Pro can be fitted with lighting kit, well protected from damages.



Operating both tailgate as well as floor chain in a safe distance from the moving parts by using the remote control placed on the side of the 853 Pro.



Blockage Free Operation

The Drum Feed Control System (DFCS) is an efficient solution for blockage free operation when feeding loose material. It is a simple and reliable system, which includes a powerful electric cylinder and comb positioned above the drum. During loading the DFCS is engaged, which means that the comb is in a lowered position. This ensures that blockages of the flywheel are minimized during the start up process in loose materials.

Flywheel for Maximum Performance

The large diameter flywheel is fitted with 6 blowing paddles, providing a powerful blow for the most efficient distribution of the material and an excellent cleaning of the flywheel housing. The flywheel does not chop the straw, thus ensures virtual full length material suitable for bedding of covered yard areas.

Once the flywheel speed is at a sufficient level, all you need to do is to push a button and the DFCS comb will be gradually disengaged and open for full flow through the flywheel resulting in perfect flow and no stop/blockage.

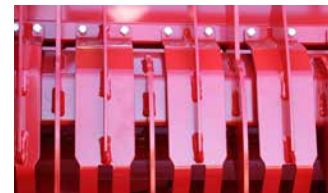
The progressive release of the comb offers a more gentle start, protecting the machine and minimising the risk of blockages. A reliable and simple system with minimum maintenance!

Flexible Solution for Bedding and Feeding

Shredex 853 Pro is specifically designed to distribute straw, hay and silage. It is a flexible and efficient solution for bedding and feeding when working with baled straw, hay or silage and clamp silage. The solid construction ensures reliable performance and long machine life. The 3m³ bale chamber is capable of transporting the largest square bales or 2 round bales.



A comfortable control unit shows the actual status of the DFCS.



DFCS engaged to reduce the risk of blockages during loading and flywheel start up.



DFCS disengaged for maximum flow through the flywheel.



The Efficient and Simple Answer *for Bedding and Feeding*



Accurate and Even Bedding

A connection to a tractor for the Shredex 852 will allow quick pick-up of bales and provides enormous manoeuvrability even on difficult farm places and barn passages.

The economic concept can be upgraded with various options to all farm demands. For perfect discharge the Shredex 850 range is available with side chute or swivel chute.



The special design of the tailgate and optional bale retainer offers the possibility to carry one extra round bale.

The Bedding Specialist

The mounted bale chopper Shredex 852 is designed specially for working with straw for bedding purposes. The chamber of 2m³ offers fast and easy loading of bales and the tailgate offers the possibility to carry an extra bale for improved efficiency.

Self-Loading of Bales

The hydraulically operated tailgate fitted to the Shredex 852 provides a convenient self-loading facility for easy loading of square or round bales.



Convenient and simple self-loading of bales.

“**Flexible tailgate** enables carrying of additional bales”



The drum-comb combination is designed for shredding straw bales in all formats.



For multipurpose of bedding and feeding, a silage kit with extended comb is available.

The Drum and Flywheel

The working heart of the Shredex 852 is the combination of drum, comb and flywheel – all specifically designed to shred straw bales of various formats. The drum is fitted with spirals of knives and small ‘gripper’ teeth, which take the straw from the bale and feed it evenly into the flywheel chamber.

Original Parts & Service

We are here so you can focus on your crop

- 
- 1 Long lasting, high quality spare parts**
 - 2 Over 100 years of parts knowledge**
 - 3 Support from a wide network of dealers**
 - 4 24/7 spare parts service**
 - 5 Highly skilled dealer technicians**



“MYVICON
Connected farming, my way”

A personalised online platform tailored to your machine needs

With MYVICON you will benefit from easy access to Vicon’s online service tools. Receive first hand access to information on future developments and updates, operator and spare part manuals, FAQs and local VIP offers. All information is gathered in one place.



**REGISTER YOUR PRODUCT NOW:
MY.VICON.EU**



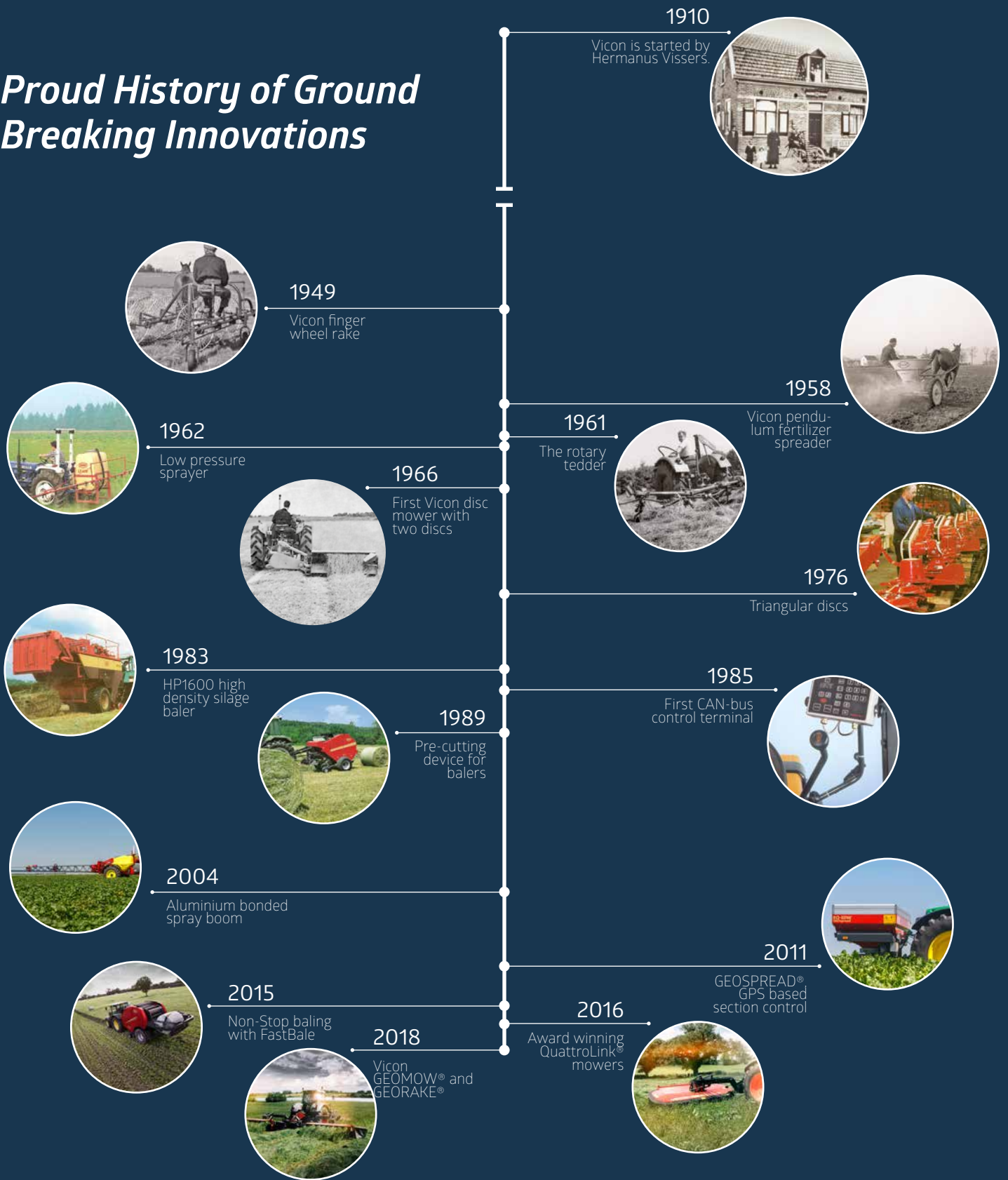
Facts

| Model Shredex | Bale Choppers / Feeders | | | | | |
|-------------------------------------|-----------------------------------|------------------|-----------------|-------------------------|----------------|------------------|
| | 852 | 853 Pro | 856 Pro | 863 | 863 Pro | 864 |
| Operation | | | | | | |
| Chute | Swivel chute | 4-Stage Swivel | 4-Stage Swivel | 4-Stage Swivel | 4-Stage Swivel | 4-Stage Swivel |
| Cubic Volume (m ³) | 2.00 | 3.00 | 6.00 | 3.00 | 3.00 | 4.20 |
| Blowing Distance* (m) | up to 18 | up to 20 | up to 20 | up to 20 | up to 20 | up to 20 |
| Chassis | Mounted | Trailed | Trailed | Trailed | Trailed | Trailed |
| Metering System | Single Drum | Single Drum DFCS | Two-Drum | Single Drum | Single Drum | Single Drum DFCS |
| Gearbox Specification | 2-speed | 2-Speed | 2-Speed | 2-Speed | 2-Speed | 2-Speed |
| Capacity | | | | | | |
| Load Capacity (kgs) | 800 | 1250 | 3000 | 1500 | 1500 | 2000 |
| Unloaden Weight (kg) | 1435 | 1885 | 2265 | 1950 | 2000 | 2050 |
| Max. Round Bale Width (m) | 1.35 | 1.35 | 1.35 | 1.35 | 1.35 | 1.35 |
| Max. Round Bale Diameter (m) | 1.80 | 2.00 | 2.10 | 2.10 | 2.10 | 2.10 |
| Max. Square Bale Size (m) | 1.20x1.20x2.50 | 1.20x1.20x2.70 | 1.20x1.20x2.70 | 1.20x1.20x2.70 | 1.20x1.20x2.70 | 1.20x1.20x2.70 |
| Dimensions | | | | | | |
| Overall Length - Door Closed (m) | 2.87 | 3.95 | 5.10 | 4.00 | 4.00 | 4.55 |
| Overall Height (m) | 2.60 | 2.66 | 2.66 | 2.66 | 2.66 | 2.66 |
| Overall Height - Chute open (m) | 2.70 | 3.06 | 3.06 | 3.06 | 3.06 | 3.06 |
| Overall Width - Machine (m) | 2.14 | 1.95 | 1.95 | 2.00 | 2.00 | 2.00 |
| Overall Width - over Tyres (m) | - | 2.01 | 2.10 | 2.01 | 2.01 | 2.01 |
| Discharge | | | | | | |
| Chute | Electric | Hydr./Elec. | Hydr./Elec. | Hydraulic | Hydraulic | Hydraulic |
| Attachment to Tractor | | | | | | |
| Power Requirement at PTO (kW/HP) | 40/55 | 48/60 | 56/75 | 51/70 | 51/70 | 51/70 |
| PTO Input Speed (rpm) | 540 | 540 | 540 | 540 | 540 | 540 |
| Wide angle PTO | - | ● | ● | ● | ● | ● |
| Safety Protection | PTO Friction Clutch & Overrun | | | | | |
| Tractor Flow Requirement | 40 litres/min @ 180 bar | | | 50 litres/min @ 180 bar | | |
| Equipment | | | | | | |
| Bale Retaining Kit | 0 | 0 | 0 | 0 | 0 | 0 |
| Remote Control | 0 | ● | 0 | ● | ● | ● |
| Number of Knives on Drum | 14 x Standard - 28 extra optional | | | | | |
| Wheel Equipment | - | 10x15.3x10ply | 11.5x15.3x14ply | 10x15.3x14ply | 10x15.3x14ply | 10x15.3x14ply |
| Road light kit | 0 | 0 | 0 | 0 | 0 | 0 |
| Mudguard | - | 0 | 0 | 0 | 0 | 0 |
| Drawbar, Ring Hitch or 2-pt Linkage | - | ● | ● | ● | ● | ● |
| Silage Kit | 0 | ● | ● | ● | ● | ● |

● Standard 0 Optional - Not available * Depending on material and barn-specific conditions

Information provided in this brochure is made for general information purposes only and for worldwide circulation. Inaccuracies, errors or omissions may occur and the information may thus not constitute basis for any legal claim against Kverneland Group. Availability of models, specifications and optional equipment may differ from country to country. Please consult your local dealer. Kverneland Group reserves the right at any time to make changes to the design or specifications shown or described, to add or remove features, without any notice or obligations. Safety devices may have been removed from the machines for illustration purposes only, in order to better present functions of the machines. To avoid risk of injury, safety devices must never be removed. If removal of safety devices is necessary, e.g. for maintenance purposes, please contact proper assistance or supervision of a technical assistant. © Kverneland Group Kerteminde AS

Proud History of Ground Breaking Innovations



My way of Farming!



www.vicon.eu