

IsoMatch

Product Range
2021 - 2022



Smart and Easy Precision Farming Solutions



My way of Farming!

LOOKING FOR SMART & EASY SOLUTION

My way of Farming!

An aerial photograph of a rural farm landscape. The foreground is dominated by large, rectangular fields of green crops, likely corn, planted in neat rows. A winding road or path cuts through the fields. In the middle ground, there are several farm buildings, including a large barn with a red roof and a smaller white house. The background shows a vast expanse of green fields stretching towards a distant horizon under a clear sky. The overall scene is peaceful and well-maintained.

NS?

I enjoy working the land, running my farm and connecting with nature. Farming is my way of life, and despite being rough at times, I never grow weary of everyday tasks like attending to my land and livestock. I keep up with developments by staying loyal to personal philosophies and applying the appropriate strategy.

I shape and influence my own future by combining craftsmanship with modern technology, employing the very best machinery. I actively seek new opportunities, by being innovative in my way of working. I work hard to grow a good crop. I am passionate about my livestock, providing my animals with only the best. My farm and its returns reflect who I am, because my heart and soul is put into the work I do.

Farming is about passion, about growing and developing, my crop, my farm, myself, my way.



My Way *of Farming*



Vicon's precision farming offering can be identified by the iM FARMING label, explaining the solutions in terms of efficiency, cost-saving, and comfort of use.

Your Craftsmanship, Our Technology

IsoMatch - The Precision Farming Offering

We believe in the freedom to choose your own approach. Precision farming is a way of life. Grow your crops, farm and yourself, your way. Vicon's precision farming offering consists of innovative and custom made equipment, designed to fit your personal vision and beliefs with respect to the heritage of your profession. Smart equipment custom designed to your way of farming. Now you carry out your work in a smarter, more efficient and easier way. That is iM FARMING.

Easy Machine Control

With the IsoMatch Tellus GO+

Your first step to Precision

The IsoMatch Tellus GO+ offers a more powerful processor, allowing for significantly faster responsiveness and increasing the ease of navigation. The IsoMatch Tellus GO+ handles demanding applications like IsoMatch FarmCentre, allowing advanced features and remote connection to your implement for a higher yield at less cost. Ease of setting up the implement with the soft keys and simple use of the hard keys and rotary switch for optimal control while driving remains the trademark of the IsoMatch Tellus GO+ terminal, and is testimony to Vicon's commitment to bring farmers the most advanced technologies to improve productivity and efficiency.

When deciding what equipment to purchase, it is not always easy to find the optimum solution in the broad market offering of today. Technology is developing fast with tractors and implements increasingly being equipped with high-tech electronics. You want to keep up with these developments and in the same time stay loyal to your personal philosophies. We understand this complexity and are committed to provide you with easy yet advanced farming solutions that fit your way of farming. Therefore the IsoMatch Tellus GO+, is made for easy machine control and efficient farming.





“ Made for Easy
Machine Control
**and Efficient
Farming** ”





A PRO in Your Profession *With the IsoMatch Tellus PRO*

As a passionate farmer you want to combine your craftsmanship with an innovative way of working. You demand efficient, easy to operate machines in order to achieve great precision and cost savings in fertiliser, chemicals and seeds, leading to the best quality crops.

To fulfill these demands, Vicon developed the 12-inch IsoMatch Tellus PRO terminal. With its advanced hardware and software features, this terminal provides you with the optimum experience for an all-in-one control system inside the tractor cab. It is the centre for connecting all ISOBUS machines and a platform for running precision farming applications. It offers everything you need to get the best out of your machines and crops, as well as cost savings in fertiliser, chemicals and seeds by using automatic section control and variable rate control. With the unique dual screen functionality it gives you the opportunity to view and control two machines and/or processes simultaneously.

Ready for the Future

Time is money and because farming is your way of living and provides your income, no time can be wasted. That is why 'fast' is the keyword for this terminal in the IsoMatch range. With state of the art hardware, you experience a fast responding terminal which can handle demanding applications.

With the IsoMatch Tellus PRO you are ready to work with innovative functions, features and apps. One advantage is the possibility to connect this terminal to our telematics solution IsoMatch and smart web application IsoMatch FarmCentre. The maximum working range for the task controller is increased to 10 km from the starting point. And with the high brightness screen you experience even greater operator comfort.

“ The Optimum Experience for ***an All-in-one Control System*** ”



IsoMatch Universal Terminals

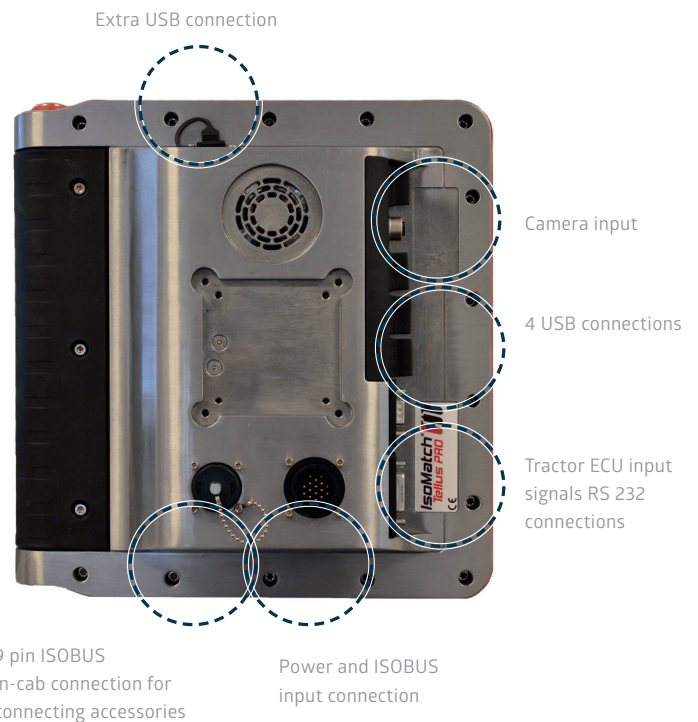
Be innovative in your way of working

As a proud and professional farmer you want to have the best machinery and electronic solutions performing at the optimum every time you are in the field. As a leader in ISOBUS technology, Vicon guarantees returns by providing you with easy farming solutions. By providing full Agricultural Industry Electronics Foundation (AEF) certifications for all our equipment we ensure compatibility of the IsoMatch Tellus PRO and IsoMatch Tellus GO+ to all ISOBUS machines. Just step into the tractor, turn the key and go! No difficult configurations, the terminal brings the implement automatically into view.

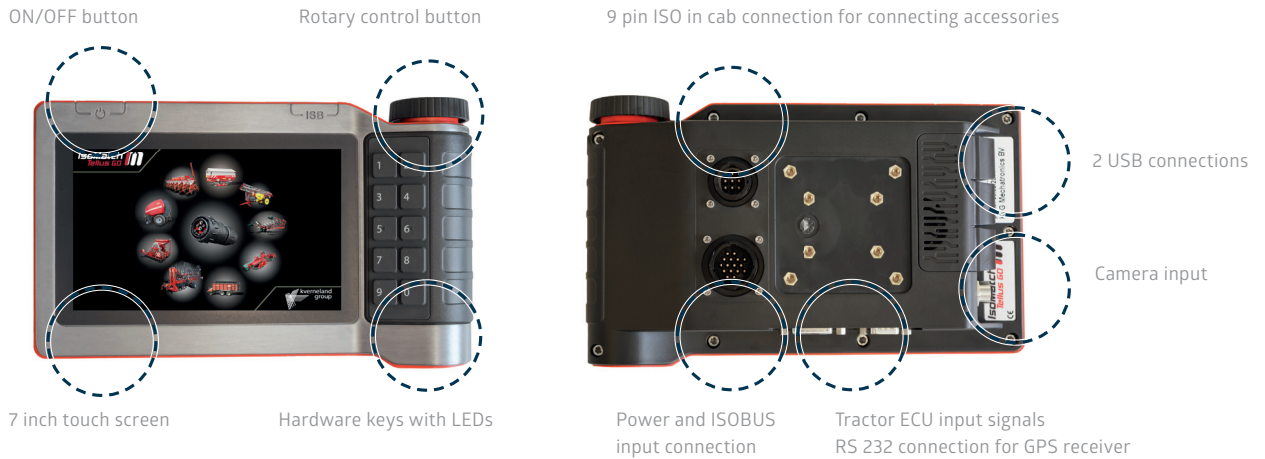
IsoMatch Tellus PRO



"Full in Control with the click of a button"



IsoMatch Tellus GO+



| Features | Universal Terminal | |
|--|---------------------|---------------------|
| | IsoMatch Tellus PRO | IsoMatch Tellus GO+ |
| Hardware Function | | |
| Screen size | 12 inch | 7 inch |
| Dual screen | • | - |
| Touch screen | • | • |
| Rotary button | - | • |
| Push buttons | - | • |
| USB connection | 4 | 2 |
| Software Function | | |
| Universal ISOBUS Terminal | • | • |
| Tractor ECU | • | • |
| Task Documentation | • | • |
| Automatic Section Control license* | • | • |
| Automatic Variable Rate Control license* | • | • |
| IsoMatch GEODRIVE® license* | • | - |
| Manual Guidance | • | • |
| Calculator | • | • |
| Integrated digital manuals | • | • |
| Spreader AutoSetApp | • | • |
| Accessories/Add on | | |
| IsoMatch Mobile (IsoMatch FarmCentre connectivity) | • | • |
| IsoMatch AutoDrive-E automatic steering | • | - |
| IsoMatch Global (PRO) GPS antenna | • | • |
| IsoMatch Grip auxiliary device | • | • |
| IsoMatch InLine manual guidance | • | • |
| IsoMatch (Multi)Eye camera system | • | • |
| IsoMatch Wireless (Wifi) support | • | • |

* Purchase separately



Develop Yourself with E-learning

IsoMatch Simulator is a free downloadable virtual training program. It simulates all functions of the IsoMatch Universal Terminals, Vicon ISOBUS machines and its Precision Farming application, IsoMatch GEOCONTROL. Train yourself and make yourself familiar with your machine to avoid errors and improve your machine performance.

The Precision Farming Application

An Easy and Precise Way of Working

Working the land, running your farm, connecting with nature and farming are a way of life. When there is work to be done, you need the optimum setup and solutions to work as precisely as possible. IsoMatch GEOCONTROL, an advanced precision farming application within the IsoMatch Tellus PRO and IsoMatch Tellus GO+, helps you to control all ISOBUS compatible machines. Combined with the IsoMatch Global GPS receiver it fulfills the future needs towards an easy and profitable way of working.

IsoMatch GEOCONTROL - Section Control

The Section Control license makes sure that the implement's sections will be switched on and off automatically. This avoids undesired overlap and operation outside the field border.

- Shut off sections when driving over previously covered areas
- Shut off sections when driving outside field boundary
- Shut off sections when driving backwards
- Headland control
- Manual override possibility

IsoMatch GEOCONTROL - Variable Rate

With the Variable Rate license you can automatically adjust the rate of your machine based on variable rate maps. It enables you to vary the rate of for example seeds, fertiliser and chemicals.

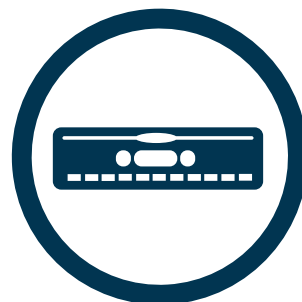
- Forward place specific rate from task to machine
- Record applied rate from machine to task

IsoMatch GEOCONTROL -Manual Guidance

- Advised driving position using guidance lines (straight, curved or combined) in the field and on headlands.
- Extendable using the optional IsoMatch InLine light bar to place guidance in line of sight.
- Smart boundary recording: independent from the working width, even without any connected implement.
- Manual guidance for all operations, including nonelectric or non-ISOBUS implements e.g. cultivators, tedders etc.

Documentation

All tasks that have to be performed can be uploaded very easily with a USB. Afterwards you can create a report the same way. When using the IsoMatch FarmCentre, the importing and exporting of tasks and reports can be done remotely.





“ Optimum Growing
Conditions and
Increased Yield ”

A profitable way *of farming*

Clear Benefits

- Easy and comfortable operation, due to not having to manually switch on or off sections or change the application rate. Focus 100% on driving in the field.
- More efficient work and avoiding overlap leads to cost savings of 5-10% on e.g. fertiliser or pesticides. Better growing conditions and increased yield.
- With IsoMatch GEOCONTROL®, even working at night becomes very easy. Work is more efficient and accurate (DGPS: 30-50 cm accuracy, RTK: 2-3 cm accuracy) and overlaps are avoided which leads to cost savings on fertiliser, chemicals and seeds, better growing conditions and increased yield.

Free of Charge Features

- Documentation: saves all operational job data and field maps for exchange via USB to farm management information systems or the new IsoMatch FarmCentre possibilities.
- Manual guidance: advised driving direction using guidance lines in the field and on headlands in combination with the IsoMatch InLine.
- Smart field boundary recording: independent from the working width, even without an implement connected.
- Boundary shrinking: create new inner boundaries by setting the desired width of the headland. Manual guidance for all operations includes non- ISOBUS implements.
- Multiple Guidance Lines: it is possible to create multiple Guidance Lines with a maximum of 20 guidelines per field.





“ IsoMatch
GEOCONTROL
*Gives more
freedom*”

IsoMatch Accessories

Modern Precision Technologies

Tractors and implements are becoming more complex as technology is developing rapidly. More and more machines and terminal functions are available in the market and are essential for growing a good crop. Because farming is a way of living and is rough at times you need the optimal set-up and easy machine control that make your way of farming much easier. Therefore Vicon provides you smart IsoMatch accessories that are made for easy and efficient farming.



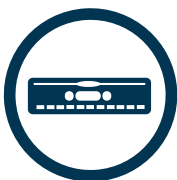
IsoMatch Grip

The IsoMatch Grip is an ISOBUS auxiliary device developed for great operator comfort and efficient machine control. Its ergonomic shape and the complete freedom of assigning and controlling a total of 44 implement functions from one device are unique in the market today. From your fingertips you have endless possibilities to operate all machine functions as desired. And assignments are saved per machine making it even more applicable to your needs.



IsoMatch Global 3

Following up our successful IsoMatch Global, we now offer the IsoMatch Global 3. A GPS antenna system with DGPS accuracy (30-50 cm) for the best precision possible. It adds precision to manual guidance, automatic section control, variable rate control in combination with IsoMatch GEOCONTROL.



IsoMatch InLine

The IsoMatch InLine is a light bar for manual guidance including section status information. Mounted in the line of sight, you can easily see the distance from the guidance line and to which direction you should steer for the ideal position.
(accuracy: DGPS 30 - 50 cm).



IsoMatch (Multi)Eye

Connect up to 4 cameras to the IsoMatch Universal Terminals. You can easily switch between the cameras without the need for an additional screen in your tractor cab. It gives you full control and overview of the entire machine operation during day and night, because of its night vision by integrated LEDs. This increases safety when reversing the machine or manoeuvring around obstructions.



Full Control *the Way you Want*

“I cannot imagine not using precision farming tools anymore.

Until 6 years ago, we used to let the contractor spray liquid nitrogen. We felt that this was getting quite expensive, so we started looking for a fertiliser spreader, which ended up being the Vicon R-OM GEOSPREAD spreader. Mainly because Vicon has a user-friendly terminal and GEOSPREAD. Normally you buy a certain amount of fertiliser which you want to apply to your field, but with Vicon R-OM GEOSPREAD, you can be more precise, by which we realised a saving of 10% on fertiliser. That 10% is mainly caused by the closing of the sections in case of overlap.

We now use our Vicon spreader together with IsoMatch GEOCONTROL and IsoMatch FarmCentre. This enables us to spread our grassland more accurately with the help of prescription maps. I create these prescription maps on my computer, where I decide on the amount of pure nitrogen I am going to spread per acre, after which we can use biomass maps to determine the individual dosage on the fields. I then send it wirelessly to my IsoMatch Tellus PRO. I download the prescription maps in my tractor and drive off to my fields. By the means of my GPS location, it knows where I am and I select the prescription map for the field in question and can start spreading.

I can now work much faster and also more precisely at the same time. Which certainly saves me 20% if not more on fertiliser. Normally we would spread around 30 tonnes of fertiliser on our fields, which means we have already saved 6 tonnes of fertiliser. As for time, I think we work twice as fast now, giving me the possibility to do other things as well.”

Carlo van de Lagemaat
Woudenberg - The Netherlands
90 acres, Dairy farmer



**“Controlling the
Implement
has Never Been
so Easy”**



Discover new Opportunities *With IsoMatch FarmCentre*

Today's farming is evolving from individual craftsmanship to precision agriculture. This will have a huge impact on authentic farming approaches across the world. To shape and influence your future you combine craftsmanship with modern precision farming technology. You actively seek new opportunities to be innovative in your profession. To allow for a better overview in your way of farming and applying your appropriate strategy, Vicon has developed the IsoMatch FarmCentre application, the first of a series of telematics solutions.

IsoMatch FarmCentre is applicable for all compatible Kverneland and Vicon ISOBUS machines in combination with an IsoMatch Tellus GO+ or IsoMatch Tellus PRO. Whether you wish to control your fleet, monitor tasks remotely or analyse machine performance data, IsoMatch FarmCentre provides this in an efficient web application, linking implements, tractors, terminals and the cloud in one continuous flow of data and connectivity.

Keep track of your machines

Whether you are a farmer or contractor, IsoMatch FarmCentre allows you to track the movement of your fleet in real time. It is possible to verify where your machines have been operating on the map, or even how fields have been worked on, giving you complete control and overview of your farm. Keeping track of multiple machines spread over vast areas has never been so easy. Additionally if the machines should encounter errors or breakdowns then alerts will be sent directly to the IsoMatch FarmCentre web application

so quick action can be taken remotely. Allowing a dealer read only access to your account for remote support will decrease your down time and increase your productivity.

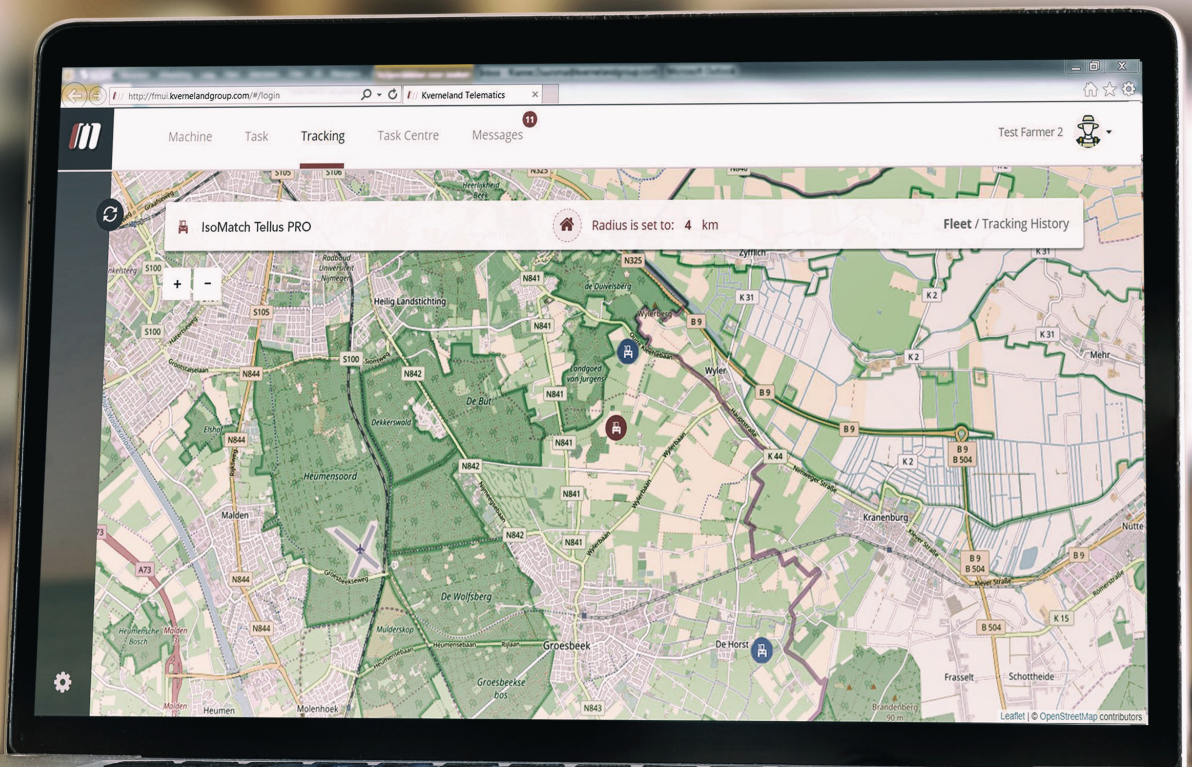
Data analysis from a distance

With IsoMatch FarmCentre machine performance parameters can be tracked and analysed for optimal performance. Actual information about quantity of pressed bales, fertiliser application and more is also shown in the application. All this can be done remotely from a computer or even a tablet or smartphone.

Remote task management

To further improve efficiency and save time, the contractor or consultant can send tasks to the operator remotely and once the work is done that same task can be sent back to the contractor from the field. Once received in the FarmCentre application tasks can be downloaded, exported, analysed and used for reporting and invoicing purposes, decreasing your admin time.





“ Be innovative
*in your
profession*”



Loyal Support With *IsoMatch Service Tools*

Farming is your passion. You put your heart and soul into the work you do to provide the best for your animals and crops. To accomplish this you employ the very best machinery with innovative solutions. But with the increase of technology in precision farming, You also need fast and effective service and support. When you face a problem in the field you expect a solution as fast as possible from the dealer or manufacturer. In some cases the response can be delayed due to traveling time and communication between different stakeholders, which causes you loss of time and money.

With the unique position of Vicon having its own electronic solutions for both its machines and universal terminals, it has been possible to develop service solutions for the complete ISOBUS range in order to solve your problem in an efficient way.

Complete support with IsoMatch TopService

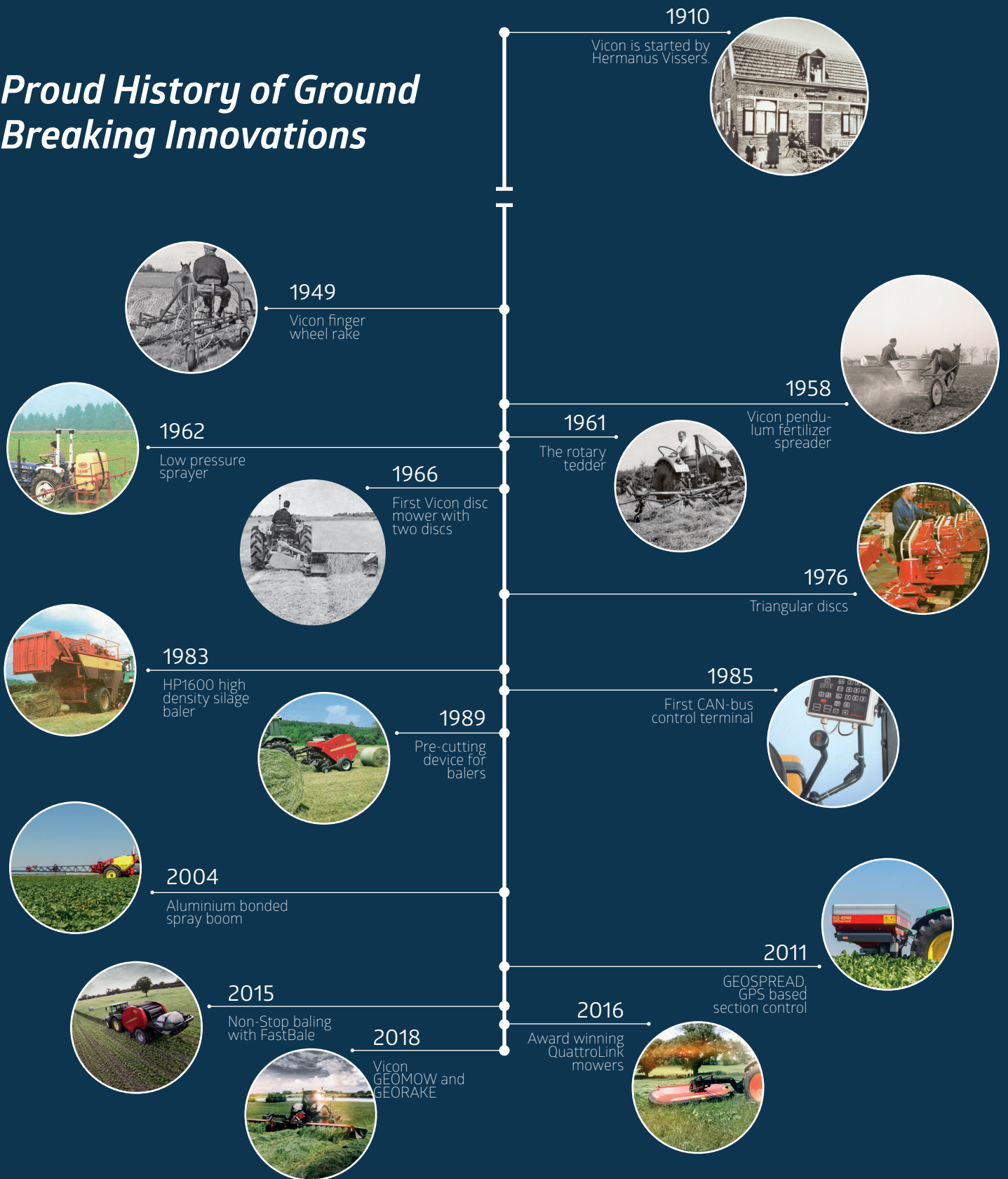
IsoMatch TopService is a professional service tool for Vicon's electronic products to provide diagnostics and software update capabilities. It helps the dealer to diagnose and find solutions on the spot, faster and in a simpler way. The tool includes clear and user friendly design, multi-language support, automatic downloads of software, release notes, documentation and many other features.



Calculate your savings

With the iM FARMING Calculator you can calculate your possible saving for your farming situation. The iM FARMING Calculator is able to make a true estimation of the possible savings based on your farm size, field shapes, working width and actual costs of spreading, spraying and seeding.

Proud History of Ground Breaking Innovations



My way of Farming!

